

# URGENT MATERNAL WARNING SIGNS



**Headache that won't go away or gets worse over time**



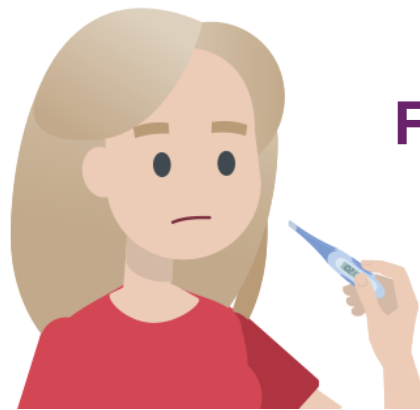
**Dizziness or fainting**



**Thoughts about hurting yourself or your baby**



**Changes in your vision**



**Fever**



**Trouble breathing**



**Chest pain or fast-beating heart**



**Severe belly pain that doesn't go away**



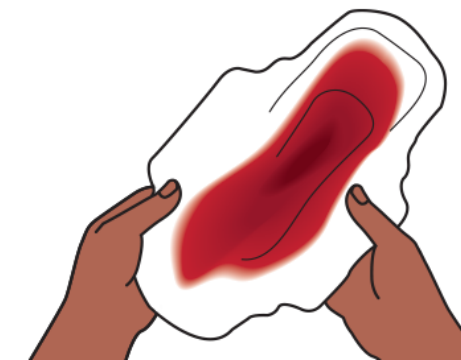
**Severe nausea and throwing up (not like morning sickness)**



**Baby's movements stopping or slowing**



**Vaginal bleeding or fluid leaking during pregnancy**



**Vaginal bleeding or fluid leaking after pregnancy**



**Swelling, redness, or pain of your leg**



**Extreme swelling of your hands or face**



**Overwhelming tiredness**

**If you have any of these symptoms during or after pregnancy, contact your health care provider and get help right away.**

**If you can't reach your provider, go to the emergency room. Remember to say that you're pregnant or have been pregnant within the last year.**

**Learn more: [safehealthcareforeverywoman.org/urgentmaternalwarningsigns](https://www.safehealthcareforeverywoman.org/urgentmaternalwarningsigns)**



Take a photo to learn more

© 2020 American College of Obstetricians and Gynecologists. Permission is hereby granted for duplication and distribution of this document, in its entirety and without modification, for solely non-commercial activities that are for educational, quality improvement, and patient safety purposes. All other uses require written permission from ACOG.

Standardization of health care processes and reduced variation has been shown to improve outcomes and quality of care. The Council on Patient Safety in Women's Health Care disseminates patient safety tools to help facilitate the standardization process. This tool reflects emerging clinical, scientific, and patient safety advances as of the date issued and is subject to change. The information should not be construed as dictating an exclusive course of treatment or procedure to be followed. Although the components of a particular tool may be adapted to local resources, standardization within an institution is strongly encouraged.

The Council on Patient Safety in Women's Health Care is a broad consortium of organizations across the spectrum of women's health for the promotion of safe health care for every woman.